

Project Name 项目名称



Location:
Lisbon, Portugal
地址:
葡萄牙里斯本

ADVENTURE'S PARK ROUNDABOUT

冒险乐园回环道

■ **Architecture and Fountain Design**

景观及喷泉设计

- João Branco
web:www.pluriescala.com

■ **Photographer**

摄影师

- Silvestre Zamith

■ **Water Features Consultant**

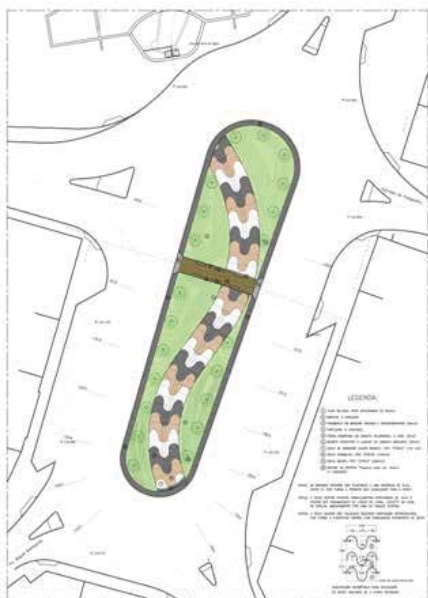
喷泉设计公司

- GHESA
web:www.ghesafuentes.com

This fifty six meters long water feature extends along the Adventure's Park roundabout in a sinuous line of pulverization water with 1,20m height, illuminated with three different colors: green, blue and red. The sinuous shape is an allusion to Falagueira's river which, in the past, flowed in this same place and now runs inside of a tube, under the fountain.

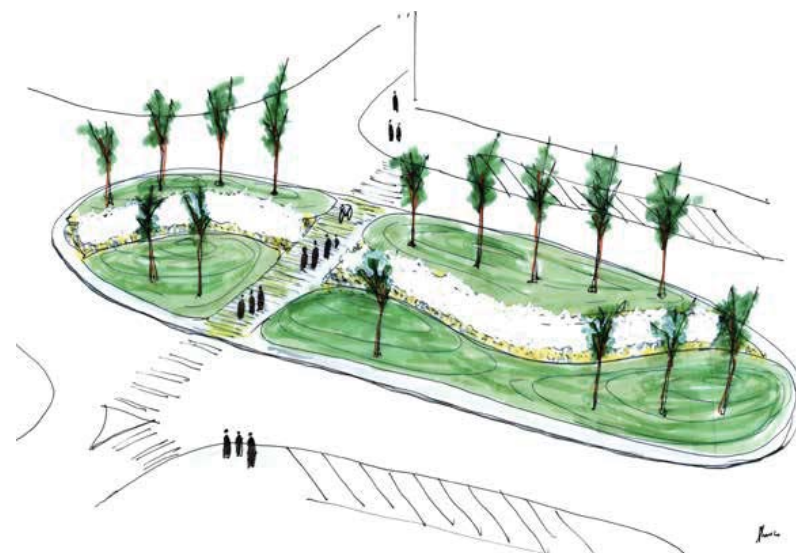
这项五十六米长的水体景观沿着冒险乐园的回环道蜿蜒曲折，上面布满了高1.2米的雾化水气，绿、蓝、红三色雾灯透过水气向外射出光线。水体景观蜿蜒流淌的轨迹，正是当时法拉圭拉河流淌的河道，而现在这条河则通过埋在喷泉下面的管道流通。

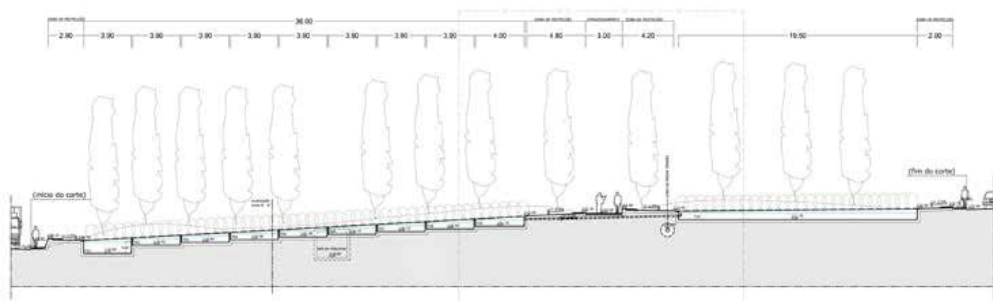
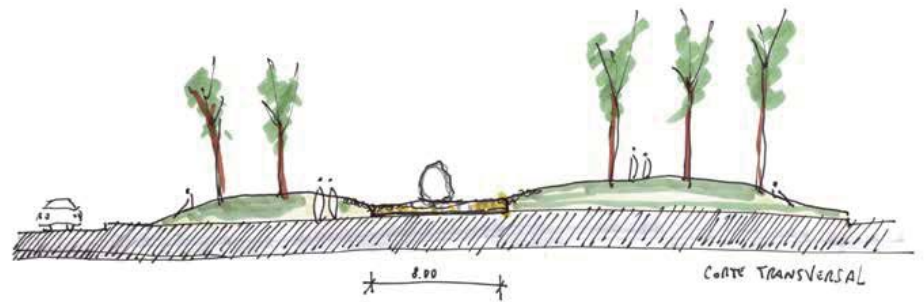
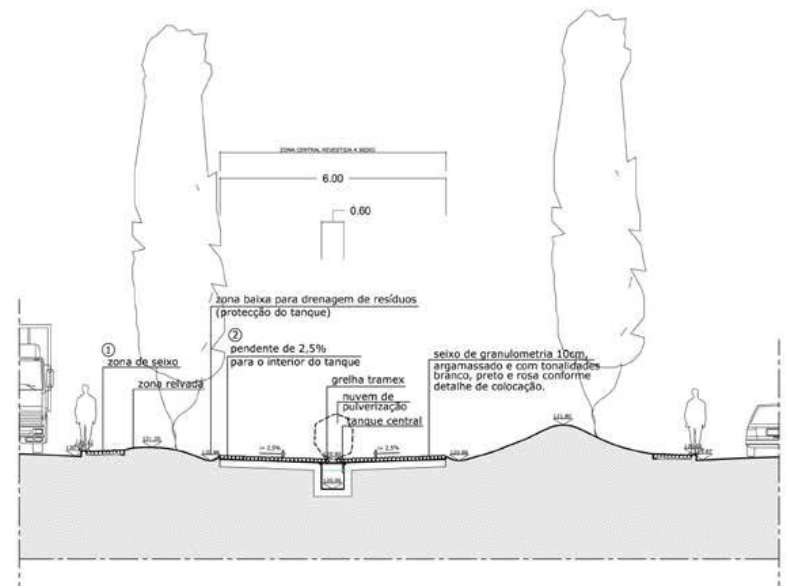




To recover and recycle the pulverized water, a wet zone was created along the pulverization line, six meters width, draining to a reservoir which reintroduces it into the system. As decoration and demarcation of the area, the use of pebble was adopted in three different tonalities.

为了收集喷出的水雾并将其循环利用，设计师在水雾区的沿线设置了一块六米宽的湿润地带，将水雾收集到一个蓄水池，然后蓄水池再将水重新引导回水雾喷射系统。为了装饰及作为景观各区域的分界线，设计师采用了三种不同颜色的鹅卵石进行铺装。





This turned possible the creation of a dynamic pavement design, representing the delicate undulation of water flowing in a slipway. The pebble, which texture and color qualities intensify when it is wet, was also chosen because of its association with rivers. When the night falls, with illumination in three different colors, each one corresponding to a third part of the pulverization line, the ornamental character of the fountain is empathized by the water, light and color, reinforcing the sinuosity and the organic shape of the intervention.

这种铺装形成了一种动态的路面设计，犹如水体在滑道上流动时产生的那种柔和的波动。设计师选择采用鹅卵石也是由于其与河流的密切相性，同时这些鹅卵石在潮湿的状态下，纹理和色泽变得更加明显。每当夜幕降临，三色雾灯分别照耀着三分之一的水雾线，在这些三色灯的映衬下，喷泉的装饰作用在泉水、灯光和色彩的衬托下，变得更加逼真神似，同时也加强了景观的曲折度和有机形态。

